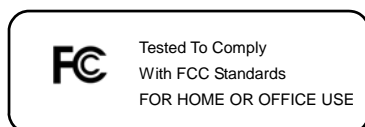


IEEE 802.11n/b/g

Wireless LAN Adapter
QUICK START GUIDE

Version 1.0



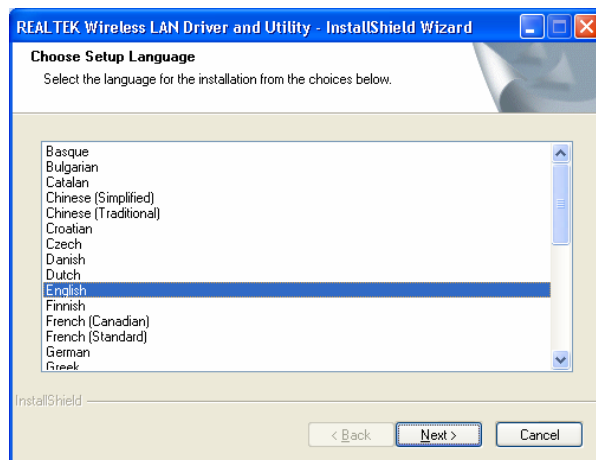
1. BOX CONTENTS

- ◆ Wireless LAN Adapter
- ◆ Quick Start Guide
- ◆ Driver CD

2. INSTALL DRIVER/UTILITY XP/2K

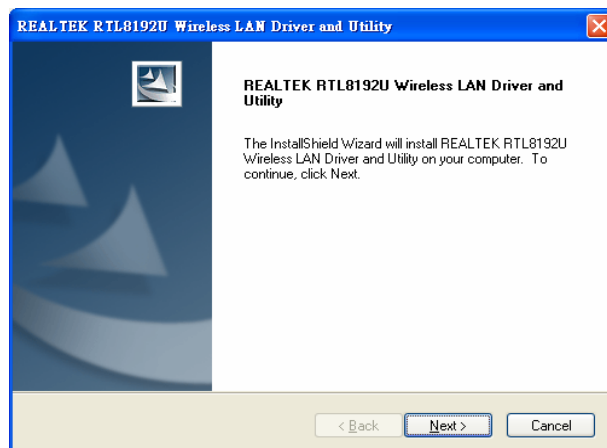
Step 1 :

Insert the installation CD into your CD-ROM. Choose the Setup Language and click **Next** button.

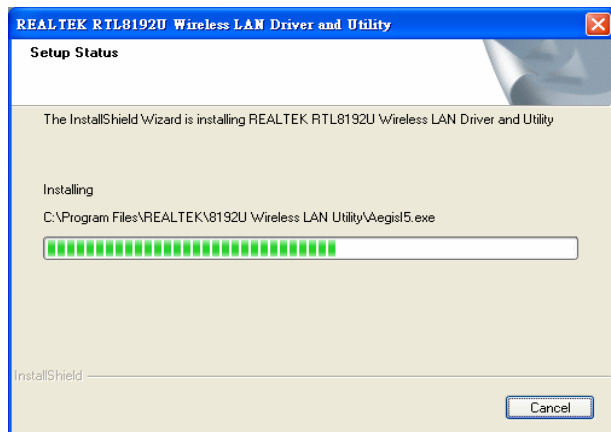


Step 2 :

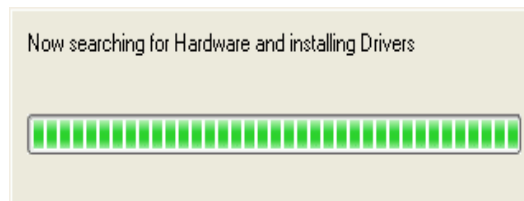
Installation descriptions shown. Click **Next** to continue.



Installing & configuring wlan utility

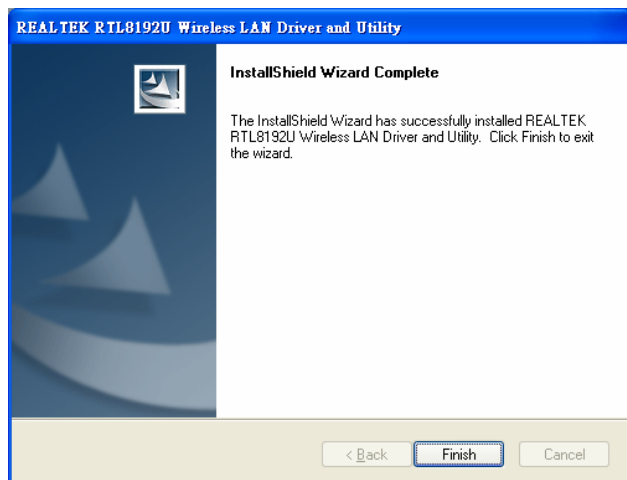


Installing Drivers.



Step 3 :

Click **Finish** to complete installation



3. Vista DRIVER

Just insert device into proper interface. Vista will install driver automatically. CD also contains the latest driver from chipset vendor.