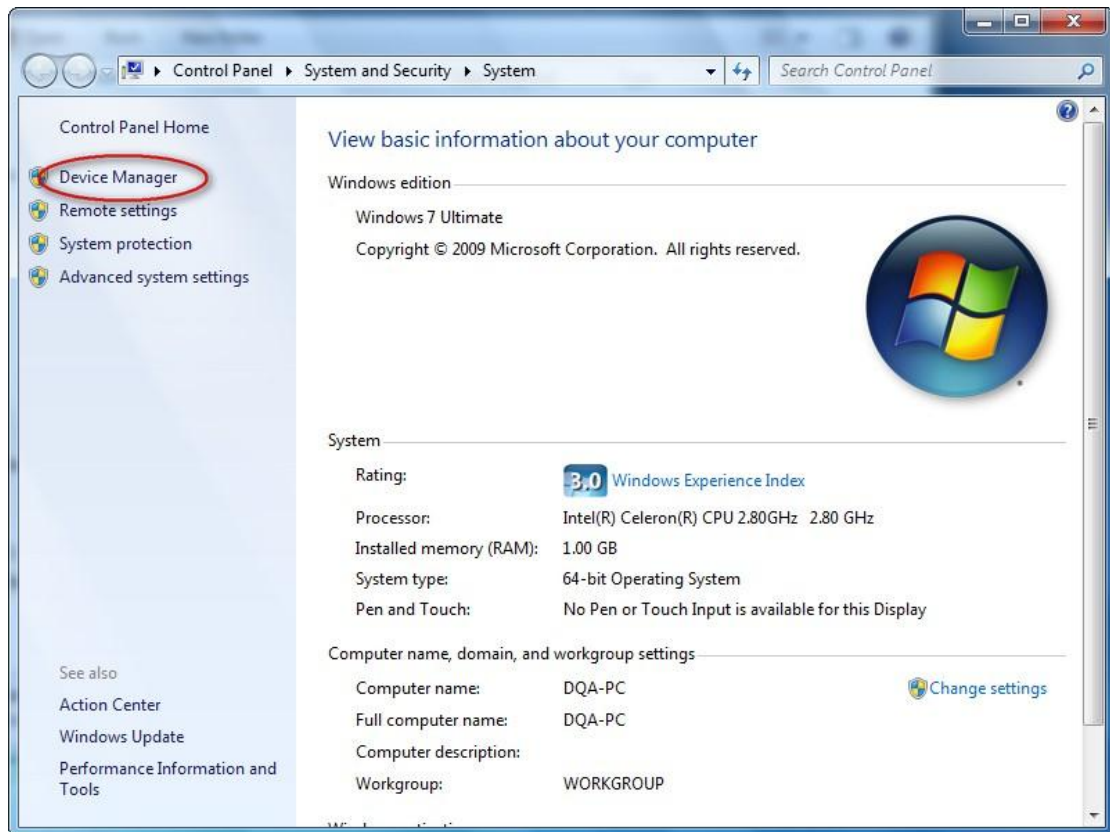
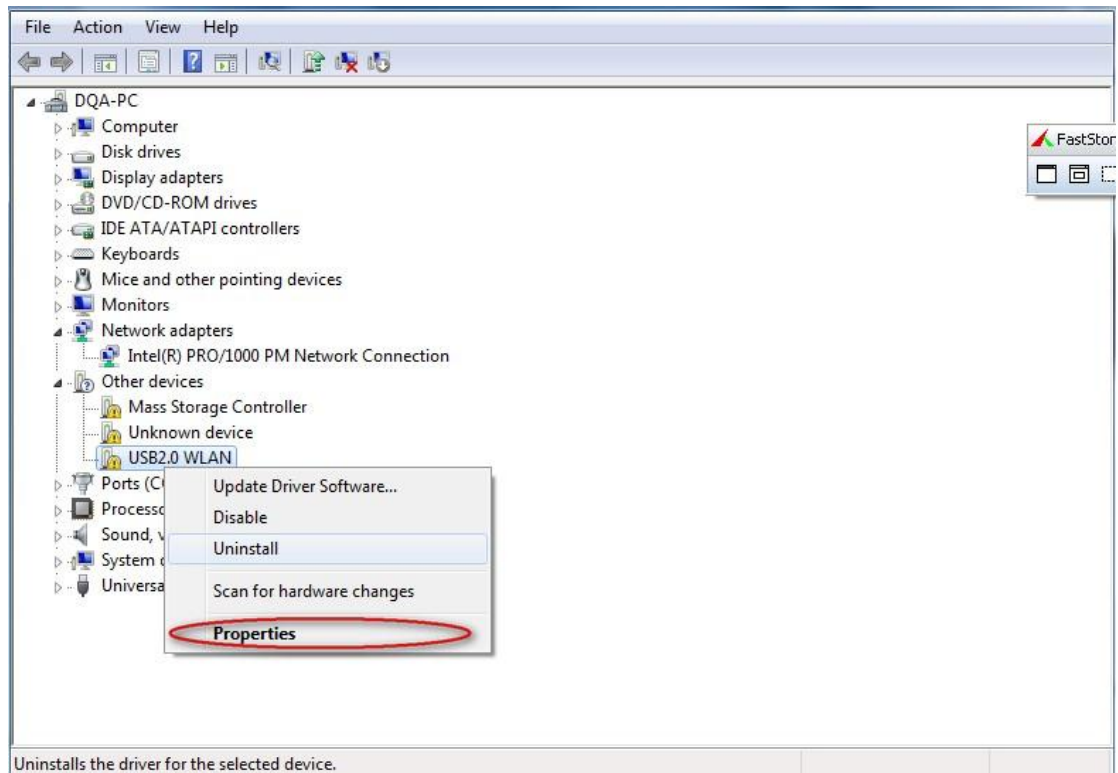


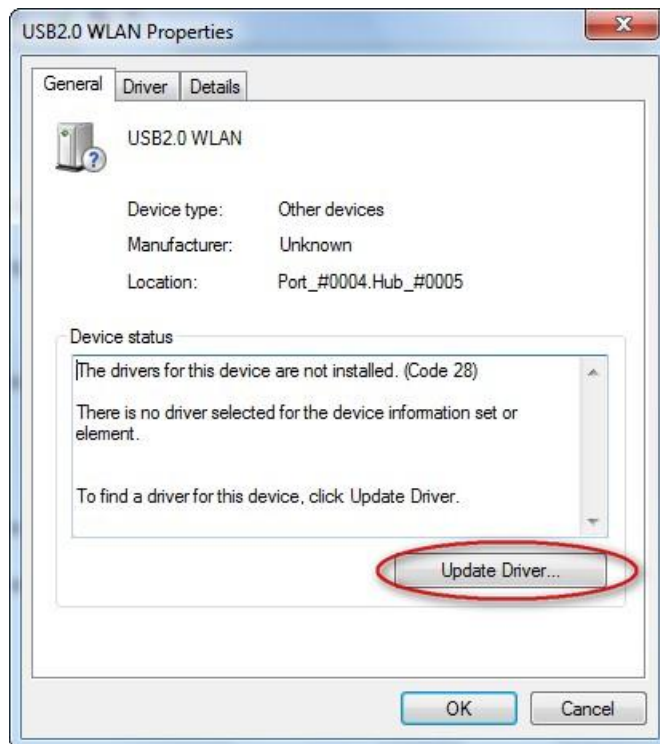
## Plug the dongle and open **Device Manager**



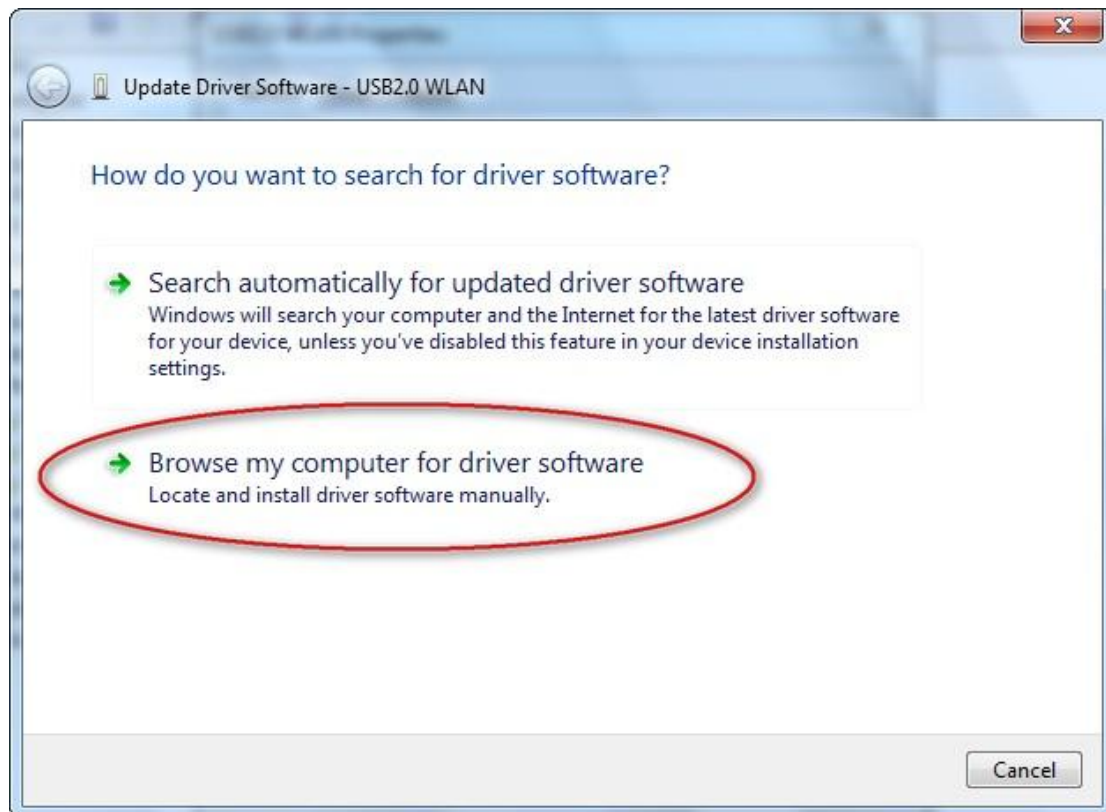
## Find USB2.0 WLAN and choose **Properties**



Click **Update Driver** button



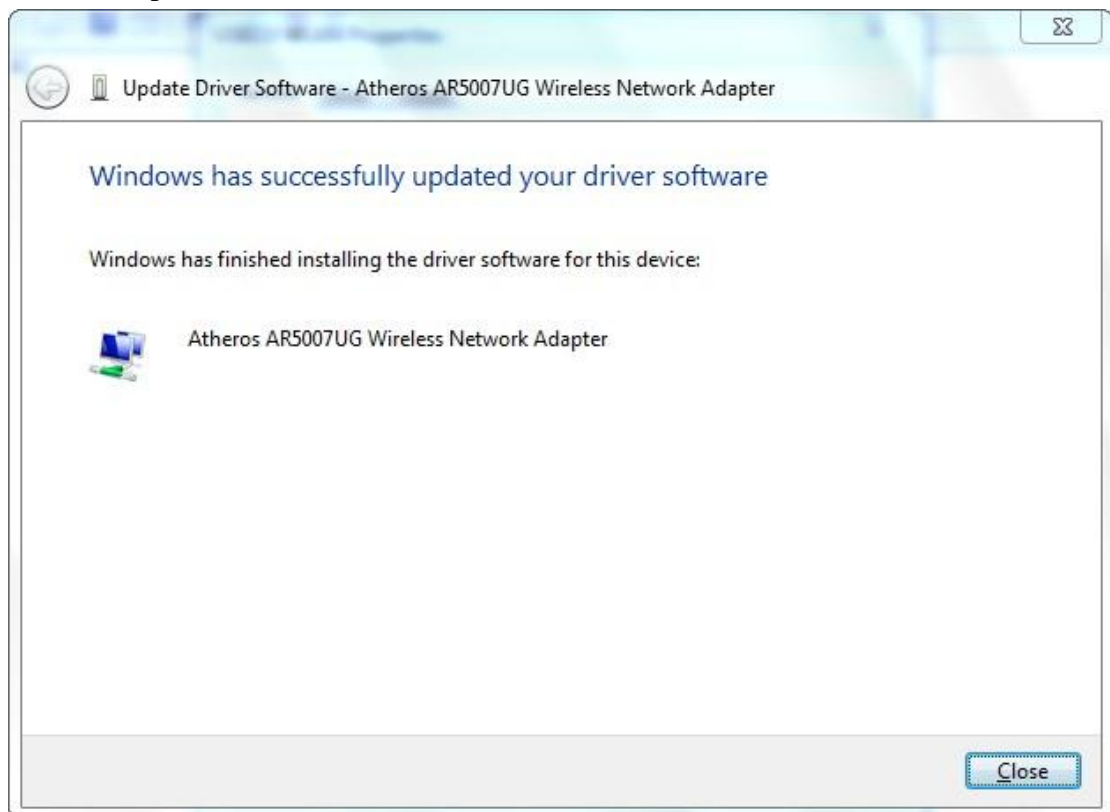
Choose **Browse my computer for driver software**



Click **Browse** button to designate your driver folder of CD-ROM, then Click **Next**



Install complete



Click icon to search AP, click  new search



Click **Connect** button.

